

2003-04

J.A. CHISHOLM, P.E. LLC

*Land Development Consultant
Engineering Planning Surveying*

2661 Riva Road, Suite 320
Annapolis, Md. 21401

April 14, 2003

Anne Arundel County
Office of Planning & Zoning
Heritage Office Complex
2664 Riva Road
Annapolis, Md. 21404

Re: Chesapeake Terrace
Case 2003-0043-V, 0044-V
JACPE. # 92-076

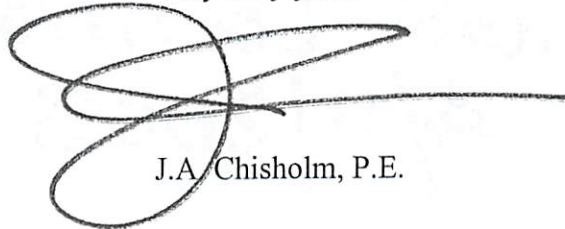
Attn.: Ms. Suzanne Diffenderfer

Dear Suzanne:

Attached please find photographic evidence of posting of the six signs for the above referenced Variance application. Also attached please find a 2000' scale vicinity map illustrating the locations of the posting. The property is posted in three locations, with two signs at each location. Signs were erected on Friday April 11, 2003. The attached photos were taken Monday April 14, 2003.

Should you have any questions please do not hesitate to contact me.

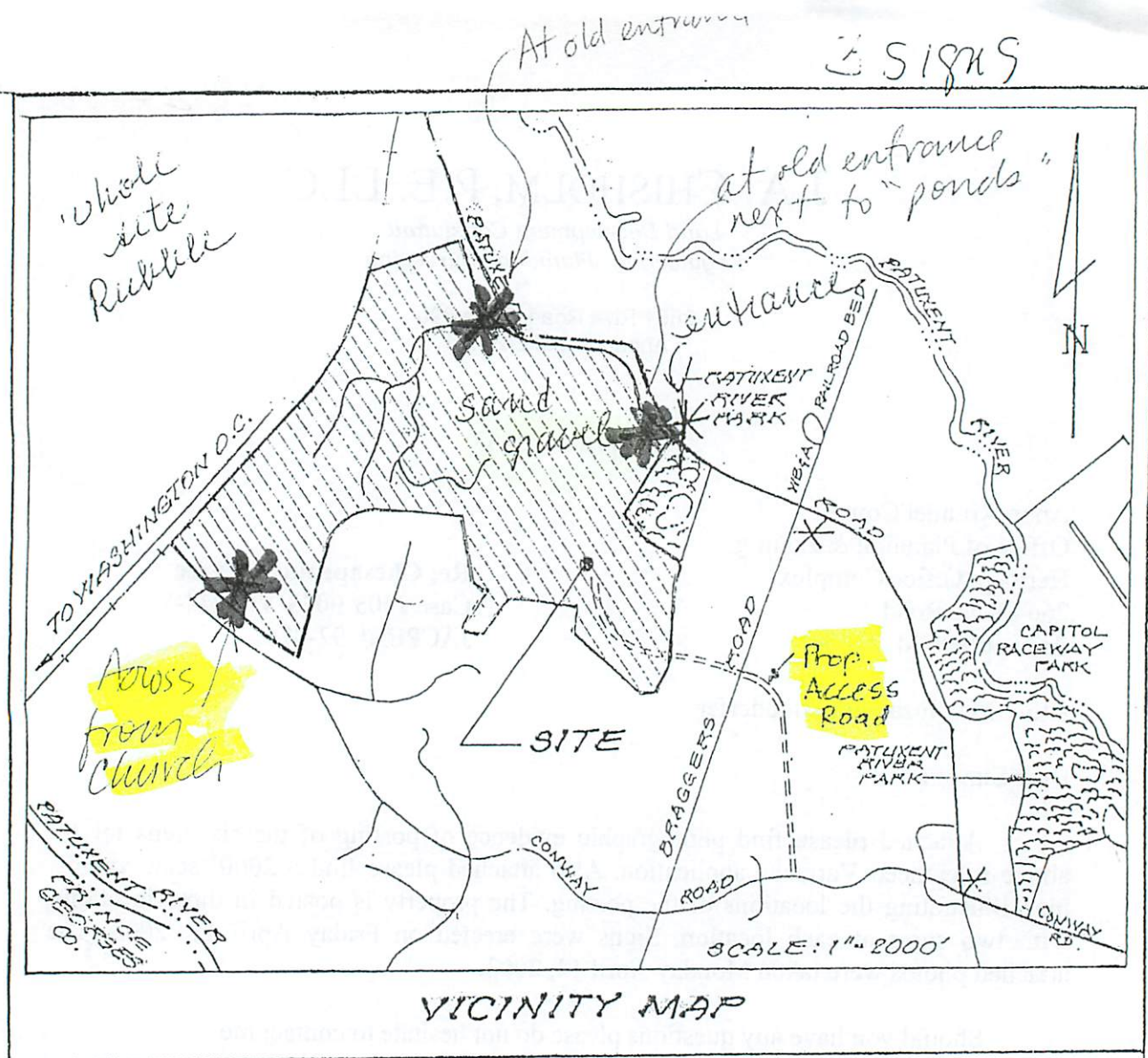
Very truly yours

A handwritten signature in black ink, consisting of a large, stylized 'J' and 'C' that are intertwined, followed by a horizontal line extending to the right.

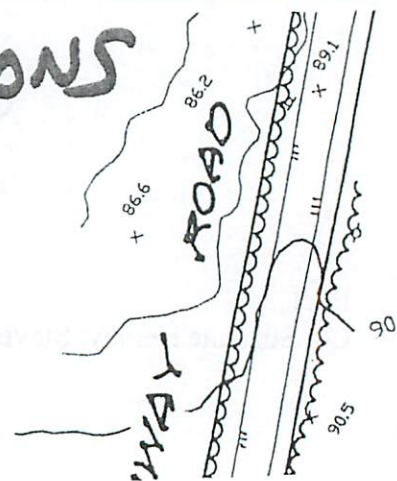
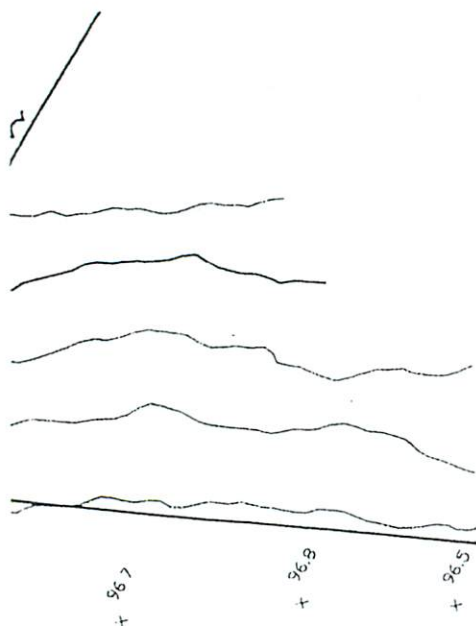
J.A. Chisholm, P.E.

Encl.

Cc: Suzanne Henley, Steve Fleischman



SIGN LOCATIONS
4/11/2003



BA decision in
Chas. Terrace line
summit cable car

SIGNS POSTED
4/11/03



SIGNS POSTED

4/11/03



SIGN POSTED
4/11/03



4/11/03

