

## West County ES - New School

### Administrative Data

<b>Architect:</b>	GWWO Architects
<b>Construction Manager:</b>	J. Vinton Schafer & Sons, Inc.
<b>Scope of Work:</b>	Construction for a new elementary school to serve Odenton and surrounding communities.
<b>Phase of Work:</b>	Design

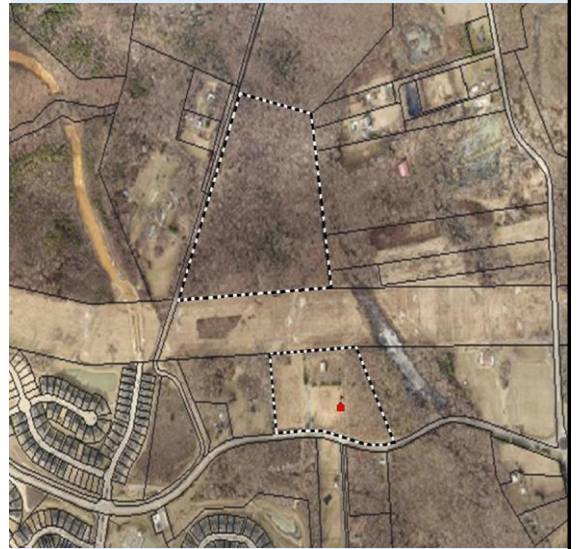
### Current Status

**Percent Complete:** 5%

The Schematic Design has started and the Architect and Engineering team is performing initial site surveys and building layouts.

### Vital Statistics

	Before	After
<b>State Rated Capacity</b>	n/a	506
<b>Gross Square Footage</b>	n/a	77,557



### Project Schedule

	Approved EdSpec	Current	Actual
<b>Educational Specifications</b>	Apr-20	Apr-20	Apr-20
<b>Feasibility Study</b>	n/a	n/a	n/a
<b>Schematic Design</b>	Oct-20	Nov-20	
<b>Design Development</b>	Mar-21	Apr-21	
<b>Construction Documents</b>	Oct-21	Oct-21	
<b>Bid Award</b>	Apr-22	Apr-22	
<b>Start Construction</b>	May-22	May-22	
<b>Occupancy</b>	Aug-24	Aug-24	

### Fiscal Data

	Approved Budget	Current Appropriation	Encumbered
<b>Plans &amp; Engineering</b>	\$3,150,000		\$1,900,000
<b>Construction</b>	\$32,578,000		
<b>FFE</b>	\$2,872,000		
<b>Project Support</b>	\$933,000		
<b>Total</b>	\$39,533,000		\$1,900,000

