

West County ES - New School

Administrative Data

Architect:	GWWO Architects
Construction Manager:	J. Vinton Schafer & Sons, Inc.
Scope of Work:	Construction for a new elementary school to serve Odenton and surrounding communities.
Phase of Work:	Design

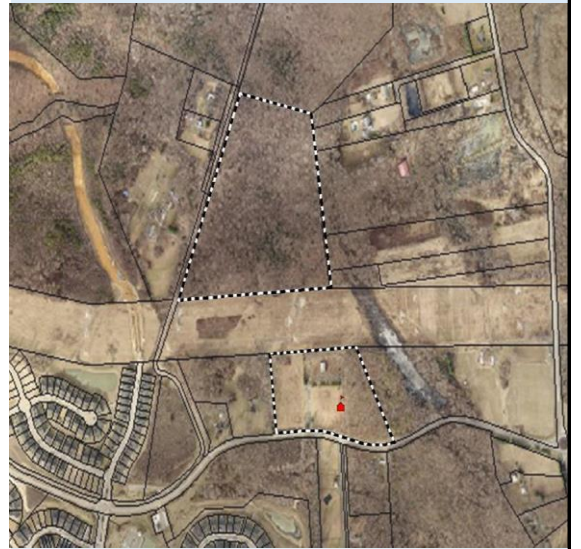
Current Status

Percent Complete: 5%

The Schematic Design has started and the Architect and Engineering team is performing initial site surveys and building layouts.

Vital Statistics

	Before	After
State Rated Capacity	n/a	506
Gross Square Footage	n/a	77,557



Project Schedule

	Approved EdSpec	Current	Actual
Educational Specifications	Apr-20	Apr-20	Apr-20
Feasibility Study	n/a	n/a	n/a
Schematic Design	Oct-20	Nov-20	
Design Development	Mar-21	Apr-21	
Construction Documents	Oct-21	Oct-21	
Bid Award	Apr-22	Apr-22	
Start Construction	May-22	May-22	
Occupancy	Aug-24	Aug-24	

Fiscal Data

	Approved Budget	Current Appropriation	Encumbered
Plans & Engineering	\$3,150,000		\$1,900,000
Construction	\$32,578,000		
FFE	\$2,872,000		
Project Support	\$933,000		
Total	\$39,533,000		\$1,900,000